

Overlook at Cherry Creek
DILLON II

Approx. square feet: 3,200
Stories: 2
Bedrooms: 4 - 6

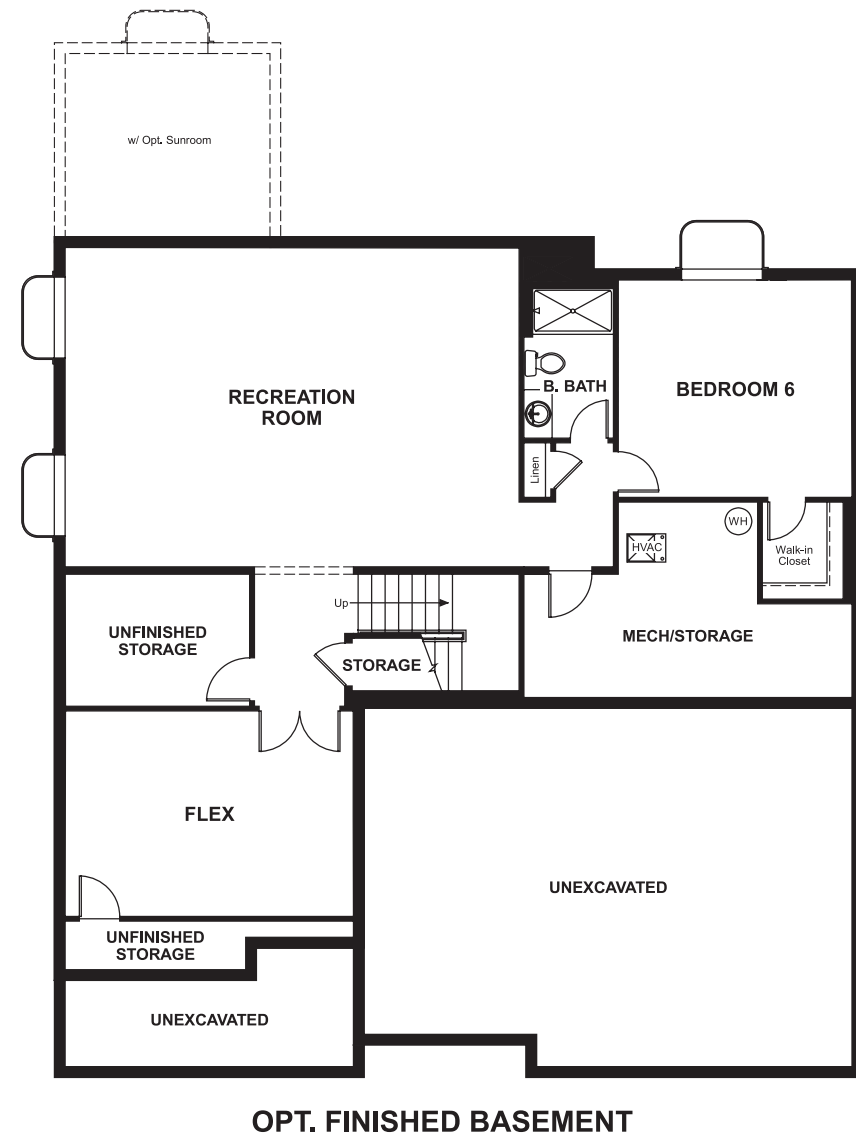
Garage: 3-car
Plan Number: D399

Overlook at Cherry Creek
DILLON II

Approx. square feet: 3,200
Stories: 2
Bedrooms: 4 - 6
Garage: 3-car
Plan Number: D399

The Dillon plan features a dramatic two-story entry and a spacious great room with a vaulted ceiling and fireplace. You'll also appreciate the formal dining room with butler's pantry that leads to the gourmet kitchen with central island and breakfast nook. Other highlights include a private study and a luxurious master suite with walk-in closet. Personalize this plan with a finished basement, covered patio, sunroom and more.

Floor Plan
Basement



Elevation A

Available elevations:



Elevation A



Elevation B



Elevation C



Elevation D



Elevation E

COMMUNITY LOCATION
Motsenbocker Road and Endeavor Way
Parker, CO 80134
303-850-5750

HOME GALLERY
8000 East Bellview Avenue, Unit C-12
Greenwood Village, CO 80111
888-402-4663



COMMUNITY LOCATION
Motsenbocker Road and Endeavor Way
Parker, CO 80134
303-850-5750

HOME GALLERY
8000 East Bellview Avenue, Unit C-12
Greenwood Village, CO 80111
888-402-4663

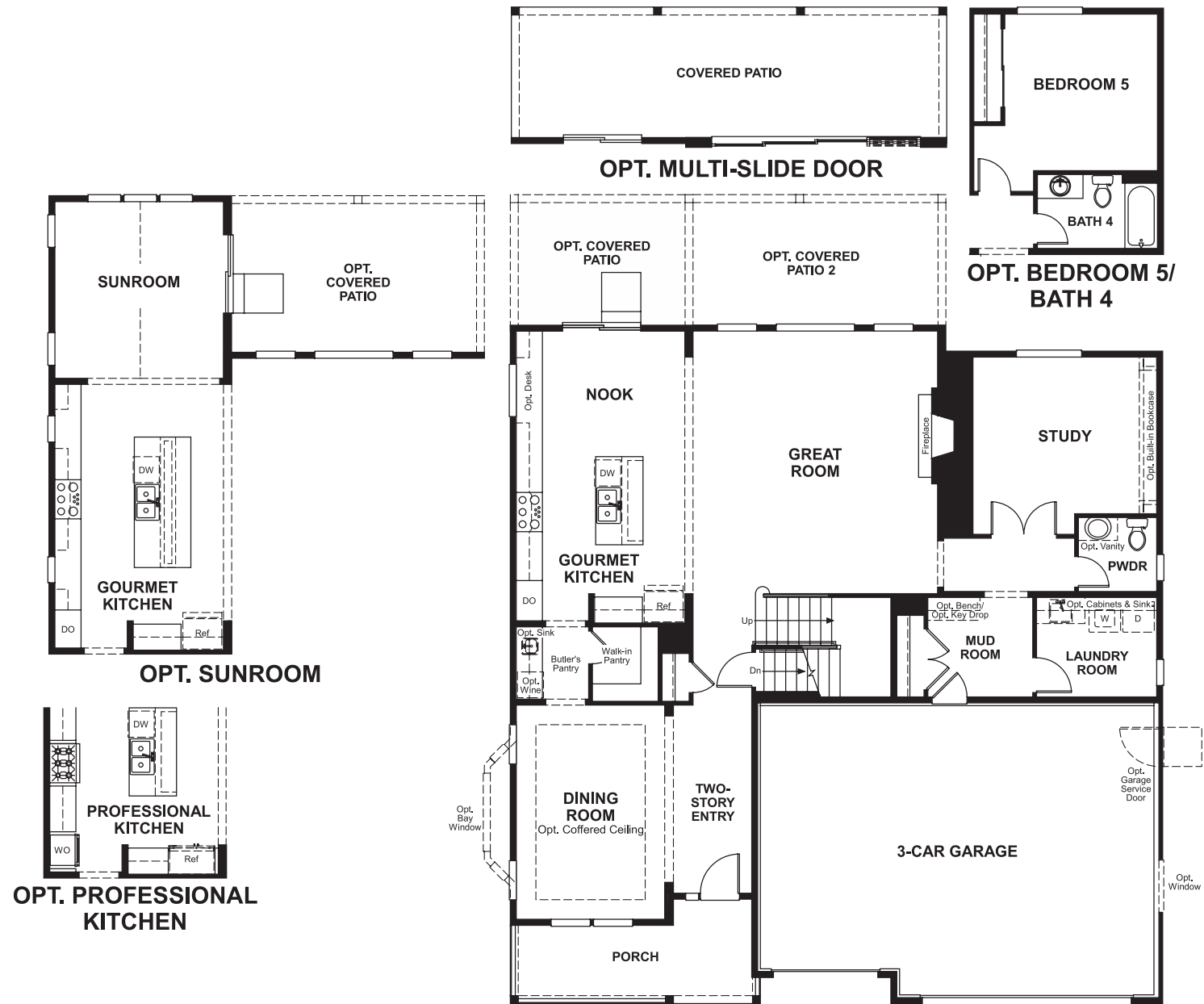


Overlook at Cherry Creek
DILLON II

Approx. square feet: 3,200
Stories: 2
Bedrooms: 4 - 6

Garage: 3-car
Plan Number: D399

Floor Plan
Main Floor



Floor Plan
Second Floor



**THIS PLAN'S PROJECTED
HERS® INDEX = 57***
Projected Rating Based on Plans – Field Confirmation Required

How does this floor plan rate?
Take a look: **100** = Standard new home* **130** = Typical resale home**
The lower the number, the better! Refer to the RESNET® HERS index brochure or go to www.RESNET.us for details.

What's a HERS® Index? HERS stands for Home Energy Rating System, a system created by RESNET® to measure home energy efficiency.[^]
A Projected HERS index or rating is a computer simulation performed prior to construction by a third-party HERS rater using RESNET-accredited rating software, rated feature and specification data derived from home plans, features and specifications, and other data selected or assumed by the rater. The projected HERS index is approximate and is subject to change without notice. Actual results will vary.

*This information is presented for education purposes only. The HERS index for a confirmed rating will be determined by a third-party HERS rater based on data gathered from on-site observations and, if required, testing of rated features for a home as featured, optioned, located, oriented and/or built.
+Standard new home is based on the RESNET® Reference Home definition with a HERS® index of 100 (based on the 2006 International Energy Conservation Code).
++Typical resale home is based on the U.S. Department of Energy definition with a HERS® index of 130.

[^]RESNET® has developed the HERS® index to indicate the comparative efficiencies of homes. It is no guarantee that energy efficiencies will be achieved.